

Adam Gumborg



Anna Johannsson &amp; Oer Odegenessent



Camila Buzan



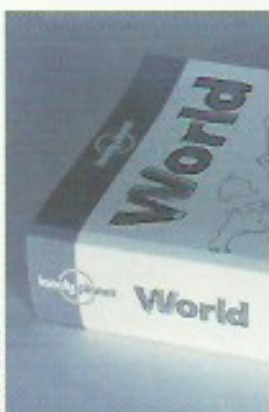
Manuel Saz



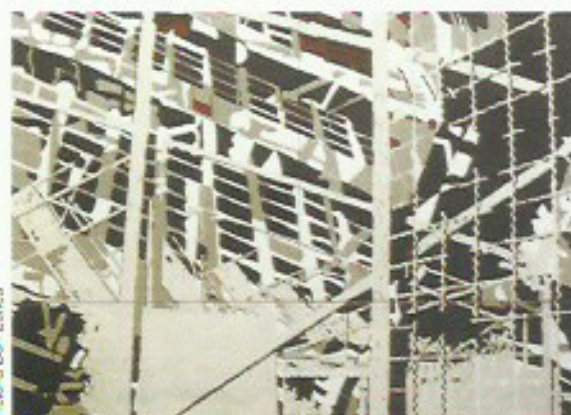
Jallo Loue



Gus Piretto



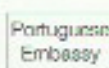
Helena Ben-Zion



Christian Skerck



Jacobs, Jackson Hutchins



eastengland|arts

The Henry Moore Foundation



Opening Saturday 6 July  
7 July to 24 August 2002

Mary Longford



Stuart Taylor



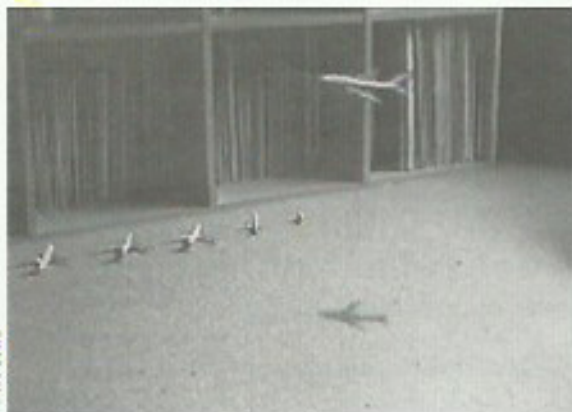
Stephen Manger







Hraski Sowa



Christine Ehardt



Graham Searson



Holger Kässmann



Daniel Morris & Dirk Pischke



Chris Lee



## NORWICH GALLERY

Norwich School of Art and Design  
St George Street Norwich NR3 1BB  
T. 01603 610561 F. 01603 615728  
E. east@norwichgallery.co.uk www.norwichgallery.co.uk

## EASTinternational

selectors  
Lawrence Weiner  
Jack Wendler



Matthew Hocking



Paul La Cour





## OPENING

**EAST opening 6 to 9pm Saturday 6 July**

**4pm Cinema City Saturday 6 July**

Lawrence Weiner introduces his videos 1970 to 2001 with Barry Barker

REACHED 1970 2.30 mins

AFFECTED AND/OR EFFECTED 1974 20 mins

FOR EXAMPLE DECORATED 1977 23 mins

UK Premiere

WILD BLUE YONDER 2001 15.15 mins

BLUE MIXON OVER 2001 5 mins

Admission £1 Box Office 01603 622047 [www.cinemacity.co.uk](http://www.cinemacity.co.uk)

**6.30pm EAST award £5000 SU Bar**

Anne Seax

Chief Executive Norwich City Council

Andrea Stark

Chief Executive East England Arts

Marjorie Allthorpe Guyton

Director of Visual Art Arts Council of England

Susan Tuckett

Principal Norwich School of Art and Design

**Bands The Neutrons & Mono à Mono**

Opening sponsored by



open Sunday 7 July 10am to 5pm

**7 July to 24 August 2002**

Open to the public

admission free

Monday to Saturday 10am to 5pm

## 02 to 91

**EASTcatalogue 2002**

'Aesthetics, Ethics, Etc...' Lawrence Weiner

Lowson Memorial Lecture

Four pages per artist, 108pp full colour, perfect bound

images of EAST 1991 to 2001

£10 postage & packing £2 UK

payments to Norwich School of Art and Design

**EASTshopping**

T-shirt 'EAST 2002 Selectors' Stuart Taylor

£15 p+p £2 UK

Most of the work in the exhibition is for sale. Buying from EAST is a very good investment in emerging artists. We are partners in the 1-free interest-free credit scheme run by East England Arts.

**EAST back catalogues**

2001 Mary Kelly/Peter Wollen

award Zanna Ishimji

2000 Keith Piper/Sebastian Lopez

award New Locke/Jeanne Al-Ani, Out of Print

1999/2000 **riverside**

1999 Peter Dalg/Roy Arden

award Lucy McKenzie

1999 Alan Charlton/Michel Durand Desert

award Martin McGinn

1997 Nicholas Logsdail/Tadita Dean

award Tomoko Iakahashi

1996 Richard Long/Roger Ackling

award Jacqueline Mesmaeker

1995 Giuseppe Penone/Marian Goodman

award Mary Evans

1994 Hudi Fuchs/Jan Dibbets

award Stephanie Smith

1993 Konrad Fischer/David Tremlett

award Kenny Hunter

1992 Marjorie Allthorpe Guyton/Helen Chadwick

award Victoria Arroy/Naomi Dines

1991 Andrew Brighton/Sandy Moffat

award Alexander Guy

all back catalogues price £10 postage & packing £2 UK



Lawrence Weiner and Jack Wendler



1. Norwich Gallery
2. Norwich School of Art and Design
3. Cornford and Cross Jerusalem
4. Chantry Car Park Theatre Street  
Daniel Milohnic and Dirk Paschke

## EASTinternational

selectors

Lawrence Weiner

Jack Wendler

## NORWICH GALLERY

Norwich School of Art and Design

St George Street Norwich NR3 1BB

T. 01603 610561 F. 01603 615728

E. [east@norwichgallery.co.uk](mailto:east@norwichgallery.co.uk) [www.norwichgallery.co.uk](http://www.norwichgallery.co.uk)



**Daniel Milohnic and Dirk Paschke Tentacles**  
Chantry Car Park Theatre Street Norwich



**Cornford and Cross Jerusalem**  
made for **riverside** 1999 near  
Puls Ferry, will be permanently  
removed on Monday 8 July

**EASTinternational Steering Committee**

Chair Keith Bartlett Lynda Morrison  
Roger Ackling Vaughan Aston  
Niki Brathwaite East England Arts  
Nicholas Johnson SCVA Andrew  
Mary Muir Norfolk County Council  
Arts Council of England Michael  
Gordon Senior David Thorp  
Rebecca Weaver Ipswich Museum  
co-opted Michelle Cotton Paul





at Norwich March 2002



sign  
at  
the Tontarles

## ARENA

The **EAST** arena in the Norwich Gallery is a place to meet and hang out during the exhibition. The arena will house the independent study archives and videos on EAST 2002 artists and previous exhibitions to enjoy at your leisure.

**6 July Nils Norman Geocruiser visits EAST**  
courtesy of Institute of Visual Culture Cambridge

**Wednesday 17 July Artists on Artists**

2pm **Camilla Brueton** on Tomoko Takahashi

EAST award 1997

2.30pm **Helen Ben-Zenou** on Ilya Kabakov

3pm **Graham Seaton** on Richard Artschwager

3.30pm **Stuart Taylor** on Marcel Duchamp

**Friday 19 July Artist to Artist**

3pm **Paul Stone Louise Short and Ben Cook**  
in conversation.

One to one sessions for artists in the Region. Booking essential tel. 01603 610561. Bring your slides and discuss your ideas with artists from other cities.

Paul Stone is a director of VANE Newcastle and International co-ordinator for (a)n MAGAZINE.

Louise Short EAST 97 co-ordinates Station Bristol

Ben Cook EAST 93 Manchester Independents

**Saturday 20 July Artist to Artist**

3pm **Leo Fitzmaurice Emma Rushton Derek**

**Tyman and Clare Iles** in conversation

One to one sessions for artists in the Region. Booking essential tel. 01603 610561. Bring your slides and discuss your ideas with artists from other cities.

Leo Fitzmaurice EAST 85 co-organiser Further artists live/work in Liverpool tower block.

Emma Rushton and Derek Tyman EAST 92 Emplacements

Manchester and St Petersburg

Clare Iles EAST 02 working with Firstsite Colchester Art Fresh.

## ARENA

Nonwich Gallery staff will join visitors in the arena for coffee at 3pm daily. Arena recycled furniture by Kaavous Clayton. Make your own tea or coffee.

**Wednesday 24 July 10am to 5pm**  
**Film Making Workshop**

Matthew Noel-Tod

£10 booking essential. Suitable for adults and children aged 14 and over.

**Saturday 24 August Galleries Day**

**11am Artists Galleries**

**Phil Gardner**

Frontier Gallery Norwich

**Stephanie Douet**

The Queen of Hungary Norwich

**Kaavous Clayton**

Useful objects from waste materials

**2pm Model Galleries**

**Kath Wood**

Firstsite Colchester

**Stefan Kalmar**

Institute for Visual Culture Cambridge

**Helen Smith**

Waygood Newcastle

**Family Days**

**Saturdays 13, 20, 27 July 3, 10, 17 & 24 August**

Drop in any time with your children and enjoy our special activity packs, gallery trails and refreshments. Free. No booking required.

**Thursday 11 July NSAD Open Day**

Find out about courses at Norwich School of Art and Design Foundation, Undergraduate and Graduate Studies.

DISPATCH 080

20 artists from 6 countries come to Norwich to make an exhibition of contemporary art in Norwich Gallery and the studios of Norwich School of Art and Design.

nittee

Catherine Moseley  
Norwich City Council  
s Manuel Chotout  
Moore Norwich Castle Museum  
s Hilary Nicol/Jeremy Theophilus  
egan Canadian High Commission  
y Moore Foundation  
ms Simon Willmoth  
Liamczak

Access

Wheelchair access via ramp at street level to Norwich Gallery.  
Main building accessible through the side entrance.  
Lift access in the main building.

Accommodation

University of East Anglia 01603 593271  
e-mail: conference.services@uea.ac.uk  
Norwich Area Tourism Agency 01603 727927  
www.visitnorwich.co.uk

Trains

London Liverpool Street depart every 30 minutes 110 mins  
Bookings Anglia Railways 01603 764776  
www.angliarailways.co.uk  
Midlands and the North via Peterborough hourly  
Bookings Central Trains 0870 0006060

Coaches

London Victoria, Heathrow, Gatwick, Stanstead  
www.gobycoach.com

Air

Norwich International Airport via Amsterdam and Manchester  
01603 411923  
www.norwichinternational.com